



GM2L-POD/S



The GM2L-POD/S allows you to operate your iPod (Mini, G3, G4, G5) using the OEM satellite radio controls of your LAN BUS or ClassII Satellite-ready GM Group radio. Using this interface, the iPod will emulate the factory XM Satellite system, providing you with one of the most interactive OEM iPod "INTERFACES" in the industry. The GM2L-POD/S also provides an additional auxiliary input.

Control of the iPod through the OEM radio includes, but is not limited to:

- Individual search by artist, playlist, song, etc...
- Ability to display the following TEXT fields:
 - Artist name
 - Song name
 - Album title
 - Playlist name
- Direct audio connection for optimal sound quality.
- Charging of the iPod.

NOTE: iPod control/browse capability may be limited in some applications.

iPod COMPATIBILITY:

Model	Firmware
iPod Mini	1.4.1
G3 (3 rd generation iPod)	2.3
G4 (4 th generation iPod)	3.1.1
Color • Photo • Video	1.2.1
Nano	1.3

Note: iPod control functions may not remain the same after updating the iPod with firmware not specified in this manual.

VEHICLE APPLICATIONS:

For use with the following vehicles when equipped with XM ready radios. (See application guides)

<u>BUICK</u>	2003-2007
<u>CADILLAC</u>	2003-2007
<u>CHEVROLET</u>	2003-2007
<u>GMC</u>	2003-2007
<u>HUMMER</u>	2003-2007
<u>PONTIAC</u>	2003-2007
<u>SAAB 9-7X</u>	2006-2007
<u>ISUZU (ASCENDER AWD)</u>	2005-2007
<u>SATURN</u>	2003-2007
<u>SUZUKI XL-7</u>	2007

INTRODUCTION

This operations manual has been prepared to provide a thorough description on how to interface and operate the iPod with your OEM car stereo. All vehicles require different PIE interfaces and installation techniques. The information given is for guidance and each installer should make necessary decisions that are not covered by this guide.

Precision Interface Electronics strongly recommends professional installation of all aftermarket equipment. The terms of warranty demand that professional assistance of an experienced installer be present, as the installation requires special tools and knowledge.

WARNINGS

1. Ensure that normal control and operation of the vehicle is not impaired by the installation, mounting all pieces securely and preventing interference to necessary vehicle operation.
2. This interface is suitable for use only in vehicles with a 12-volt negative grounding. Use on other supply voltages or alternative polarity will damage the equipment.

Please read the installation guide thoroughly, making special note to the warning section, before beginning installation.

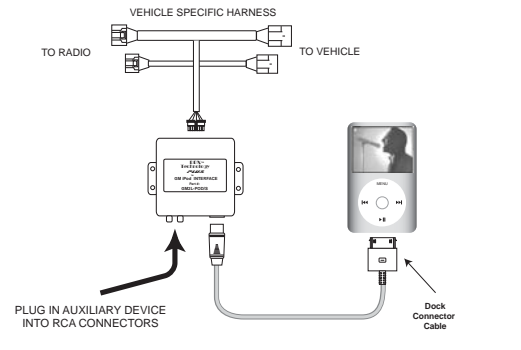
***IMPORTANT:** Before installing the GM2L-POD/S the DIP-switches (located on the top side of the interface) must be set for the vehicle specific harness. (See below)

Installation of interface to vehicle

For Class II Radios without XM Tuner

1. Remove the factory radio using GM radio removal tools.
2. Disconnect the factory 24-pin & 12-pin (if present) connectors from the rear of the radio.
3. Connect the 24-pin & 12-pin connectors of the interface harness into the radio.
4. Reconnect the factory 24-pin & 12-pin (if present) connectors into the mating connectors of the interface harness.
5. Connect the 10-pin Molex connector of the interface harness to the mating connector of the interface black box.
6. Connect the male 10-pin DIN of the 10-foot dock cable to the female 10-pin DIN of the interface black box.
7. Route the 10-foot dock cable to the iPod location (i.e. center console or glove box) do not connect iPod yet.
8. Re-install the OEM radio back into dash.

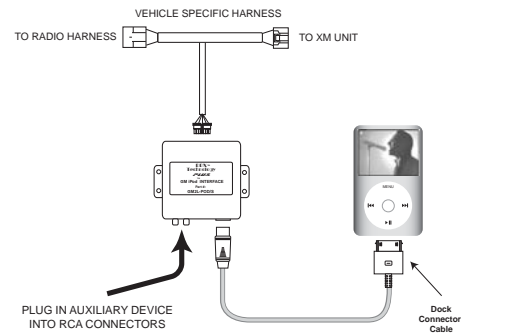
7. Route the 10-foot dock cable to the iPod location (i.e. center console or glove box) do not connect iPod yet.
8. Re-install the OEM radio back into dash.



Installation of interface to vehicle

For Class II & LAN Radios with XM Tuner

1. Locate the XM tuner.
2. Disconnect the 16-pin connector from the rear of the XM tuner.
3. Connect 16-pin connector of the interface harness into the XM tuner.
4. Reconnect the factory 16-pin connector into the mating connector of the interface harness.
5. Connect the 10-pin Molex connector of the interface harness to the mating connector of the interface black box.
6. Connect the male 10-pin DIN of the 10-foot dock cable to the female 10-pin DIN of the interface black box.
7. Route the 10-foot dock cable to the iPod location (i.e. center console or glove box) do not connect iPod yet.
8. Re-install the XM tuner.



Installation of iPod to interface

Note: For best synchronization between iPod and radio, radio and iPod should both be ON.

1. Connect the routed 10-foot dock cable to the iPod. A symbol showing your battery is being charged will show next to the battery indicator.
2. Wait a few seconds while the iPod interface searches for all the playlist(s). Searching time may vary depending on the number of playlist(s).
3. After connecting the iPod to the interface, the iPod will show the "PIE" logo. This message means the iPod is in external control mode and proper synchronization is complete.

NOTE: If the "PIE" logo does not appear within 5-10 seconds, please disconnect the iPod and recheck your connections.

Installation of interface to vehicle

For LAN Radios without XM Tuner

1. Remove the factory radio using GM radio removal tools.
2. Disconnect the factory 14-pin & 16-pin (if present) connectors from the rear of the radio.
3. Connect the 14-pin & 16-pin connectors of the interface harness into the radio.
4. Reconnect the factory 14-pin & 16-pin (if present) connectors into the mating connectors of the interface harness.
5. Connect the 10-pin Molex connector of the interface harness to the mating connector of the interface black box.
6. Connect the male 10-pin DIN of the 10-foot dock cable to the female 10-pin DIN of the interface black box.

Controlling your iPod

CLASS II RADIOS

GM2L-R03/GM2L-X03

Radios without XM ;

XM1 = iPod mode XM2 = AUX mode.

Radios with XM;

While in XM1 – press and hold Preset 6 to toggle between XM and iPod.

While in XM2 – press and hold Preset 6 to toggle between XM and AUX Mode.

1. Use “SEEK/SCAN” button to move forward or backward through current playlist.
Press and hold “SEEK/SCAN” button to fast-forward or rewind.
2. Turn “TUNE/DISPL” dial to advance songs by increments of 10.
3. Press “TUNE/DISPL” button to display SONG#, NAME, ARTIST, and ALBUM.
4. Turn “P-TYPE” dial to advance through playlists.
Select playlist using “SEEK” up button.

CLASS II TOUCHSCREEN RADIOS

Radios without XM ;

XM1 = iPod mode XM2 = AUX mode.

Radios with XM;

While in XM1 – press and hold “The System” to toggle between XM and iPod.

While in XM2 – press and hold “The System” to toggle between XM and AUX Mode.

1. Use “SEEK” to move forward or backward through current playlist.
Press and hold “SEEK” to fast-forward or rewind.
2. Turn dial on bottom left to advance songs by increments of 10.
3. Press “SELECT” to advance through playlists.
Select playlist using “SEEK”.

CLASS II NON-TOUCHSCREEN RADIOS

Radios without XM;

XM1 = iPod mode XM2 = AUX mode.

Radios with XM;

While in XM1 – press and hold “The System” to toggle between XM and iPod.

While in XM2 – press and hold “The System” to toggle between XM and AUX Mode.

1. Use “SEEK” button to move forward or backward through current playlist.
Press and hold “SEEK” to fast-forward or rewind.
2. Press “A” on bottom left dial to display SONG#, NAME, ARTIST, and ALBUM and press center of dial to select.

CORVETTE RADIOS

Radios without XM;

XM1 = iPod mode XM2 = AUX mode.

Radios with XM;

While in XM1 – press and hold Preset 6 to toggle between XM and iPod.

While in XM2 – press and hold Preset 6 to toggle between XM and AUX Mode.

1. Use “SEEK” button to move forward or backward through current playlist.
Press and hold “SEEK” to fast-forward or rewind.
2. Press “^” on bottom left dial to display SONG#, NAME, ARTIST, and ALBUM and press center of dial to select.
3. Press “CAT” button to navigate through playlists.
Select with “SEEK” up.

STANDARD LAN RADIOS

GM2L-R05/GM2L-X02

Radios without XM;

XM1 = iPod mode XM2 = AUX mode.

Radios with XM;

While in XM1 – press and hold Preset 6 to toggle between XM and iPod.

While in XM2 – press and hold Preset 6 to toggle between XM and AUX Mode.

1. Use “P-TYPE” button and then use tuning knob to move forward or backward through playlists. Select with “SEEK” up button.
Press and hold “SEEK” button to fast-forward or rewind.
2. Press “INFO” button to display SONG#, NAME, ARTIST, and ALBUM.
3. Turn “DISP/ADJ” dial to advance songs ten at a time.

EQUINOX RADIOS

GM2L-R04/GM2L-X03

Radios without XM;

XM1 = iPod mode XM2 = AUX mode.

Radios with XM;

While in XM1 – press and hold Preset 6 to toggle between XM and iPod.

While in XM2 – press and hold Preset 6 to toggle between XM and AUX Mode.

1. Use “SEEK” button to move forward or backward through current playlist.
2. Press and hold “SEEK” button to fast-forward or rewind.
3. Turn “TUNE/DISP/ADJ” dial to advance songs by increments of 10.
4. Press “MSG” button to display SONG#, NAME, ARTIST, and ALBUM.
5. Turn “P-TYPE” dial to advance through playlists.
Select playlist using “SEEK” up button.

29-BIT LAN RADIOS & EXTENDED LAN

GM2L-R01GM2LR02/GM2L-X01/GM2L-X02

1. Select iPod/AUX or XM Preset 1
2. Press “i” button to display SONG#,NAME,ARTIST, and ALBUM
3. Use “SEEK” button to move forward or backward through current playlist.
4. Press and hold “SEEK” to fast-forward or rewind.
5. Turn the dial on the right side (with musical notes) to advance songs in increments of ten.
6. Press button below desired folder to search contents. Navigate through folders with tuning knob. Select with “SEEK” up.
7. Press “CAT” button to display ARTIST/GENRE/SONG folders.

29-BIT LAN RADIOS WITH NAVIGATION

1. Press center of display to advance to iPod folder search screen (see step #6) or to change audio source.
2. Press upper “SEEK” button to select the iPod search that you have displayed.
3. Press and hold bottom “SEEK” button to switch between IPOD and XM (if factory XM is present.)
4. Turn dial with musical notes to advance songs in increments of ten or to search through selected folder.
5. Press bottom “SEEK” button to move forward or back through songs in current folder or press and hold for fast-forward/rewind.
6. While in iPod search mode – select “MUSIC” to view search options.
7. Select iPod search option – PLAYLIST/ARTIST/ALBUM/GENRE or SONGS.
8. Press “BACK” and turn tuning knob to search and view selected option text.
9. Press “SEEK” up button to select.

***IMPORTANT:** Before installing the GM2L-POD/S the DIP switches located on the top side of the unit must be set to properly correspond with the vehicle specific harness. The GM2L-POD/S programs itself to the switch settings when it is plugged into the vehicle. If you set the switches improperly and plug it in, you must unplug all cables from the GM2L-POD/S, wait a few seconds, and then plug it back in with the correct settings already in place.

DIP SWITCH SETTINGS FOR GM2L-POD/S HARNESES

GM2L-R01

1 2 3 4 5
OFF ON OFF OFF OFF

GM2L-R01 – WITH NAVIGATION

1 2 3 4 5
OFF OFF OFF OFF OFF

GM2L-X01 – NON NAVIGATION

1 2 3 4 5
ON ON OFF OFF OFF

GM2L-X01 – WITH NAVIGATION

1 2 3 4 5
ON OFF OFF OFF OFF

GM2L-R02

1 2 3 4 5
OFF ON ON ON OFF

GM2L-X02

1 2 3 4 5
ON ON ON ON OFF

For Pontiac G6 and Pursuit / Chevrolet Malibu/Max/Cobalt only; (GM2L-X02)

1 2 3 4 5
ON OFF OFF ON OFF

GM2L-R03 / GM2L-R04

1 2 3 4 5
OFF OFF OFF OFF ON

GM2L-X03

1 2 3 4 5
ON OFF OFF OFF ON

GM2L-R05

1 2 3 4 5
OFF OFF OFF ON OFF