



FRD04-POD/S

The FRD04-POD/S allows you to operate your iPod (Mini, Nano, G4, G5) using the OEM satellite radio controls of your Ford/Lincoln or Mercury Group radio. Using this interface, the iPod will take the place of the Ford Satellite system, providing you with one of the most interactive OEM iPod "INTERFACES" in the industry.

Control of the iPod through the OEM radio includes, but is not limited to:

- Individual search by artist, album, playlist, song, composer etc...
- Ability to display the following TEXT fields:
 - **Artist name**
 - **Song name**
 - **Album title**
 - **Playlist name**
- The option of using the OEM radio or iPod to control your iPod.
- Direct audio connection for optimal sound quality.
- Charging of the iPod.

NOTE 1: If OEM Ford Satellite radio is present, you must disconnect it (at the tuner location) before installing this interface.

iPod COMPATIBILITY:

<u>Model</u>	<u>Firmware</u>
iPod Mini	1.4.1
G4 (4 th generation iPod)	3.1.1
Color • Photo	1.2.1
Nano	1.3
Video	1.2.1

Note: iPod control functions may not remain the same after updating the iPod with firmware not specified in this manual.

VEHICLE APPLICATIONS:

For use with the following vehicles when equipped with satellite ready radios with 16-pin radio connectors and an "AUX" button:

*FORD

F150	2006-2007
Explorer	2006-2007
Focus	2006-2007
Freestyle	2006-2007
Fusion	2006-2007
Mustang	2006-2007
Sport-Trac	2007

*LINCOLN

Mark LT	2006-2007
---------	-----------

*MERCURY

Mountaineer	2006-2007
Milan	2006-2007

***NOTE: Some late-build 2005 model radios may have satellite radio capability, however, there is no definite way to determine this.**

Not compatible if vehicle is equipped with OEM Rear Seat Entertainment (RSE), navigation, or factory satellite radio (see NOTE 1).

INTRODUCTION

This operations manual has been prepared to provide a thorough description on how to interface and operate the iPod with your OEM car stereo. All vehicles require different PIE interfaces and installation techniques. The information given is for guidance and each installer should make necessary decisions that are not covered by this guide.

Precision Interface Electronics strongly recommends professional installation of all aftermarket equipment. The terms of warranty demand that professional assistance of an experienced installer be present, as the installation requires special tools and knowledge.

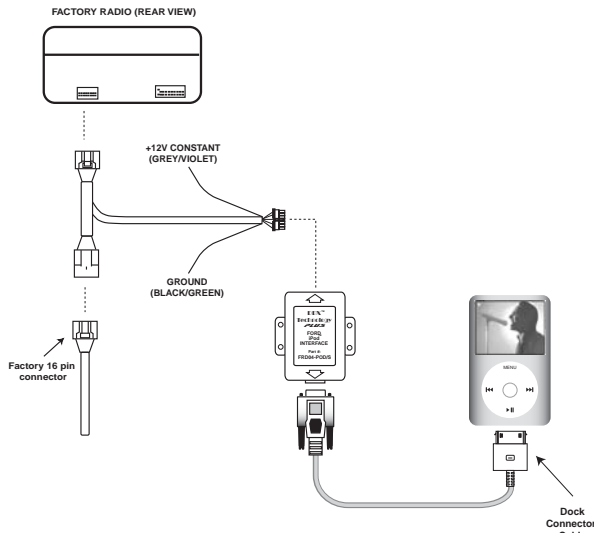
WARNINGS

1. Ensure that the vehicle's battery terminal (-) is disconnected before installation. Disconnecting the battery terminal before installing this interface ensures proper synchronization and helps avoid possible synchronization errors.
2. Ensure that normal control and operation of the vehicle is not impaired by the installation, mounting all pieces securely and preventing interference to necessary vehicle operation.
3. This interface is suitable for use only in vehicles with a 12-volt negative grounding. Use on other supply voltages or alternative polarity will damage the equipment.

Please read the installation guide thoroughly, making special note to the warning section, before beginning installation.

Installation of interface to vehicle

1. Remove the factory Ford radio to gain access to the necessary connectors.
2. Disconnect the factory 16-pin (if present) connector from the rear of the radio.
3. Connect the male 16-pin connector of the FRD04-POD/S into the radio.
4. Reconnect the factory 16-pin (if present) connector into the mating connector of the FRD04-POD/S.
5. Connect the Grey/Violet wire to a 12 Volt- constant source. (Such as the cigarette lighter) Connect the Green/Black wire to chassis ground.
6. Connect the 10-pin Molex connector of the interface harness to the mating connector of the interface black box.
7. Connect the male DB15 connector of the 4-foot dock cable to the interface black box.
8. Route the 4-foot dock cable to the iPod location (i.e. center console or glove box) do not connect iPod yet.
10. Re-install the OEM radio back into dash.



Installation of iPod to interface

Note: For best synchronization between iPod and radio, radio and iPod should both be ON.

1. Press the AUX button on the OEM radio to get to SAT1 mode.
2. Connect the routed 4-foot dock cable to the iPod. A symbol showing your battery is being charged will show next to the battery indicator.
3. Wait a few seconds while the iPod interface searches for all the playlist(s). Searching time may vary depending on the number of playlist(s).
4. After connecting the iPod, the iPod will begin to play and will show an **"OK to disconnect"** message. This message means the iPod is in external control mode and proper synchronization is complete.

NOTE: If this "OK to disconnect" does not appear and / or the iPod does not begin to play within 5-10 seconds, please disconnect the iPod and recheck your connections.

iPod Playback functions

The control functions for the iPod using the OEM radio's satellite radio controls are similar to those used on the iPod itself. Due to certain radio limitations, there are some differences in how the iPod information is accessed and / or displayed through the OEM radio.

The following describes how to control the iPod from the OEM radio, and any similarity to the iPod's controls or buttons has been noted.

Listening to your iPod

Once you are in SAT1 mode and the iPod is connected to the dock cable, the iPod will begin playing the song that it was currently at before it was connected. After the radio displays IPOD HEAD → MUSIC SELECT → PLAYLISTS, the current song title and elapsed time will be displayed (up to 12 characters). At this point the radio is in 'IPOD HEAD' mode and all controls are done through the satellite radio control buttons on the Ford radio.

Pressing the AUX button a second time will display "SAT2". This is the 'REMOTE MODE' and will restore the iPod screen and controls while still allowing limited control through the radio. "SAT3" will switch control back to the radio and is the same as "SAT1".

Radio Controls for your iPod in 'IPOD HEAD' mode (SAT1 / SAT3)

Now that your iPod is connected and you are listening to your music, you can begin navigating through your music library in much the same way you would from the iPod itself. The radio buttons / iPod controls and their similarity to the buttons / controls on the iPod itself are as follows:

- <SEEK - Similar to iPod **PREVIOUS TRACK** button; press and hold to rewind through current song
- SEEK> - Similar to iPod **NEXT TRACK** button; press and hold to fast forward through current song
- TEXT - Toggles between artist name, album name, and song name; button location varies by headunit
- PRESET 1 - (Similar to iPod **"MENU"** button)
- PRESET 2 - (Similar to iPod **"SELECT"** button)
- PRESET 3 - (Similar to counter-clockwise rotation of iPod Click wheel)
- PRESET 4 - (Similar to clockwise rotation of iPod Click wheel)
- PRESET 5 - (Toggles between **SHUFFLE SONGS, SHUFFLE ALBUMS, SHUFFLE OFF**)
- PRESET 6 - (Toggles between **SCAN ON, SCAN OFF, REPEAT ON, and REPEAT OFF**)

Browsing by song, artist, etc.

Pressing radio preset 1 will allow you to enter MUSIC SELECT mode in order to toggle through the following categories:

PLAYLISTS → ARTISTS → ALBUMS → SONGS → PODCASTS → GENRES → COMPOSERS → AUDIOBOOKS

Example of finding a song by a particular artist:

- Press radio preset 1 to get into MUSIC SELECT mode.
- Using radio presets 3 & 4, locate the ARTIST category and press radio preset 2.
- Using radio presets 3 & 4, locate the desired artist and press radio preset 2.
- Using radio presets 3 & 4, select the desired album for that artist and press radio preset 2.
- Using radio presets 3 & 4, locate the desired song and press radio preset 2 to begin play.

Radio Controls for your iPod in 'IPOD REMOTE' mode (SAT2)

Upon entering the SAT2 band on the Ford radio, the check mark on the iPod display screen will disappear, the radio will display 'IPOD REMOTE', and the iPod screen and controls are now operational. This is useful for more rapid navigation through the iPod song library when using an iPod that contains an unusually large number of songs.

In IPOD REMOTE mode, radio controls are limited to the following:

- <SEEK - Similar to iPod **PREVIOUS TRACK** button; press and hold to rewind through current song
- SEEK> - Similar to iPod **NEXT TRACK** button; press and hold to fast forward through current song
- TEXT - NO FUNCTION
- PRESET 1 - (Similar to iPod **"MENU"** button)
- PRESET 2 - (Similar to iPod **"SELECT"** button)
- PRESET 3 - (Similar to counter-clockwise rotation of iPod click wheel)
- PRESET 4 - (Similar to clockwise rotation of iPod click wheel)
- PRESET 5 - (Toggles between **SHUFFLE SONGS and SHUFFLE OFF**)
- PRESET 6 - (Used to **Pause** iPod; press again to play)